

GENERAL INSTALLATION GUIDE

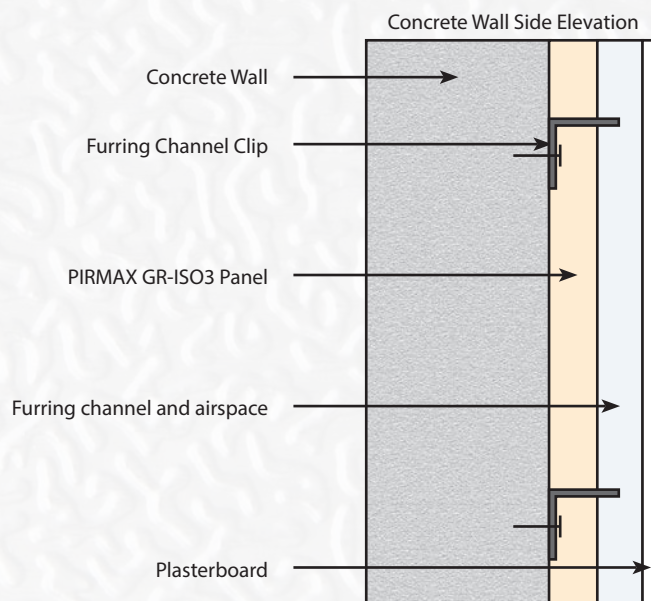
Concrete Wall Installation

CONCRETE WALL INSTALLATION

1. Fix the selected clips for the furring channel, at spacings required for the plasterboard.
2. Install the PIRMAX GR-ISO3 Panel by pushing the panel onto the clips, ensuring the wings of the clip have pushed through the panel, and the panel is butting up to the concrete wall. If required trim and neaten the foil around the clips to avoid any foil detaching from the panel.
3. Join each PIRMAX GR-ISO3 Panel side by side during the installation, butting each panel to provide continual thermal performance.
4. Furring channel must be fitted by clipping into the channel clips. The furring channel is to be fitted as closely as possible to the PIRMAX GR-ISO3 Panel.
5. Once all the above has been carefully installed, the plasterboard lining can then be fitted.

TAPING

It is recommended the joins to be taped with a 48mm or 72 mm wide high quality aluminium foil tape. When taping, ensure the surfaces are clean, sound and free of dust and contaminates. Use a tape applicator to apply appropriate pressure to the tape.



Distributed by:

reflex
INSULATION

Reflex Insulation Pty Ltd
Phone: **1300 720 185**
Email: info@reflexinsulation.com.au
www.reflexinsulation.com.au

AUSTRALIAN OWNED, AUSTRALIAN MANUFACTURED. Manufactured by: PIRMAX Pty Ltd 9/170 Boundary Road, Braeside VIC 3195 T: 03 9587 0955 F: 03 9587 0966 E: pirmax@bigpond.com © 2016 Reflex Insulation Pty Ltd All Rights Reserved. Disclaimer: The installer/user of these products will need to determine if the product is suitable for the use in the intended application. Information on this brochure is believed to be correct at the time of publication. Pirmax Pty Ltd take no responsibility for the misinterpretation, misuse and misrepresentation of information provided on this brochure. Pirmax Pty Ltd reserves the right to change the content of this publication without any notice.

Issued May 2019 • Version 1.1